

PRODUCT DATASHEET

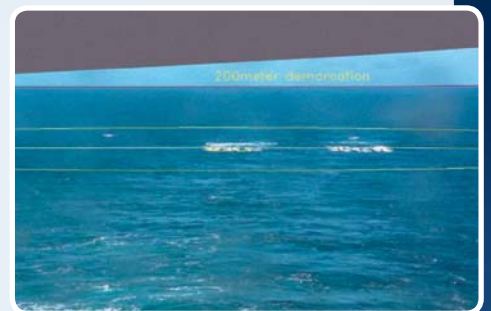
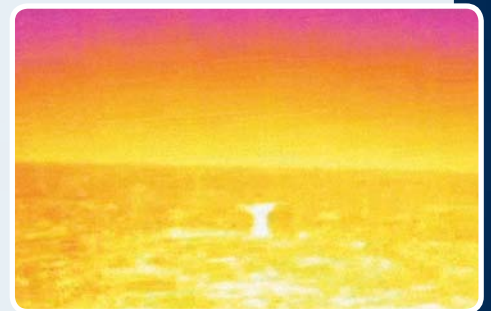
# CAMERA MONITORING TECHNOLOGY SYSTEM

## DESCRIPTION

This system enables real-time monitoring of marine mammals, small vessels, debris, ice and obstacles around a vessel. It consists of a dual visual/infrared system with HD and thermal imaging cameras, enabling both day and night monitoring up to 360° coverage.

Real-time Automated Distances Estimation at Sea (RADES) is our bespoke software for this camera system which gives objective and recordable distance estimation on the sea surface and provides an overlay of the mitigation zone. Software algorithms are utilised to enable automatic image stabilisation.

We are continually trialling new platforms and applications for its use. The ability to automatically detect marine mammals is also in development. The complete system comprises cameras, computer and suitable monitors, designed per bespoke requirement.



## SPECIFICATIONS

### Visual Camera

- Field of view: 3.10–56.56° (12° default) • Zoom: 20x
- Focal length of lens: 4.45–89mm • Resolution: HD1280x720




### Thermal Camera

- Field of view: 12° • Focal length of lens: 50mm
- Sensitivity: 0.05°K • Resolution: 640x480

### Pan and Tilt Unit

- Control: automatic and software remote controls
- Material: anodized (marine safe) aluminium – IP67 unit
- Peripherals: wiper and washer module – also remotely controlled
- Pan range: 0–360° (0.0075° resolution)
- Max pan speed: 120 deg/sec
- Commands: 50/seconds
- Height: 1.8m including mounting pedestal
- Weight: camera unit 18kg, pedestal 17kg

## APPLICATIONS

-  Mitigation for seismic surveys
-  Marine Mammal surveys
-  Mitigation for civil engineering

[www.seiche.com](http://www.seiche.com)

UK OFFICE  
Bradworthy Ind Estate  
Langdon Road, Bradworthy  
Holsworthy, Devon EX22 7SF  
T: +44 (0)1409 404050  
E: [info@seiche.com](mailto:info@seiche.com)

US OFFICE  
10355 Centrepark Drive  
Suite #240, Houston  
Texas TX77043  
T: +1 832 690 3700  
E: [b.padovani@seiche.com](mailto:b.padovani@seiche.com)

SOUTH AFRICA OFFICE  
Cape Town  
South Africa  
T: +27 834 604 4260  
E: [j.burgers@seiche.com](mailto:j.burgers@seiche.com)