

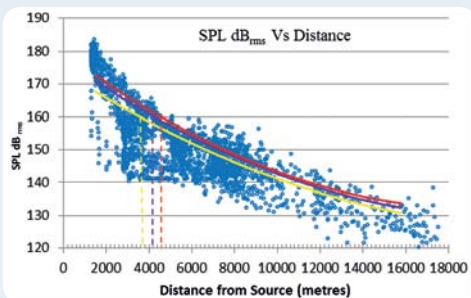
SOUND SOURCE VERIFICATION

DESCRIPTION

Seiche delivers a new solution to verification of sound levels and distances from a survey source. Government agencies and regulators worldwide are increasingly interested in SSV techniques, analysis and results in order to assess the impact of sound on marine mammals and the environment.

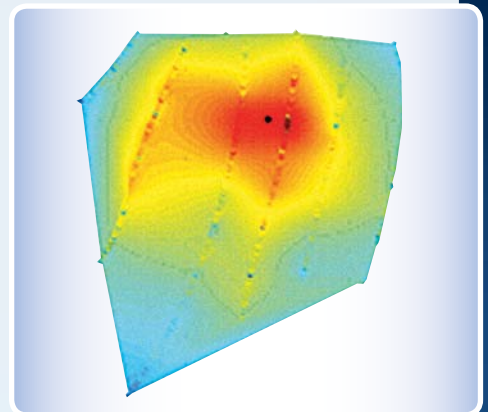
This information is then utilised in order to define marine mammal mitigation zones to be applied to a particular survey and location.

The Seiche Sound Source Verification system comprises pre-survey mathematical modelling, live data collection using drift buoys or towed array systems, post collection data analysis, modelling updates and comprehensive reports.








The drift buoy method is unique in that it provides a robust platform for the

collection of information both in terms of quantity and quality of data in a variety of challenging environments.



APPLICATIONS

-  Seismic surveys
-  Renewables
-  Field research and surveys
-  Civil engineering
-  Shipping